

# Supernova C5 0.35T

Permanent magnet open MRI



Beyond boundaries in Healthcare :  
Pioneering the future with medical imaging

[www.kuanteng.com](http://www.kuanteng.com) [info@kuanteng.com](mailto:info@kuanteng.com)

**400-848-6088**

\* The actual product shall prevail. All pictures in this manual are for reference only. \*

## Beijing R&D Center/Production Base

Address: Unit 701, Building No.7, Yongchang Industrial Park, No.3, Yongchang North Road, Beijing Economic and Technological Development Zone, Beijing  
Tel.: +86-10-85718101  
Fax: +86-10-85718102

## Liaoning R&D Center/Production Base

Address: Kuanteng Science & Technology Park, No.9, Yaodu Street, Economic and Technological Development Zone, Benxi, Liaoning  
Tel.: +86-24-45555355  
Fax: +86-24-45689287

## Fuzhou R&D Center/Production Base

Address: 3rd Generation Semiconductor Digital Industrial Park, Xinyuan Road, High-tech District, Fuzhou, Fujian Province

## Anhui R&D Center/Production Base

Address: Building No.4, Bengshan Intelligence Industrial Park, Yanshan Town, Bengshan District, Bengbu, Anhui Province

## Henan R&D Center/Production Base

Address: No.18, North Side of Yudongnan Avenue, Yudongnan High-tech Industrial Development Zone, Huangchuan County, Xinyang City, Henan Province



宽腾 Kuanteng

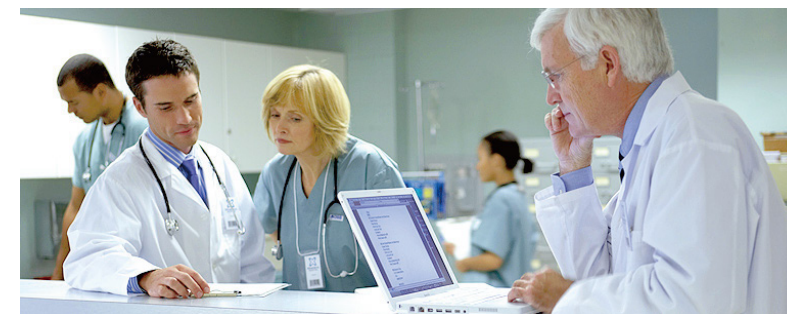
## Personalized design

- High grade permanent magnet materials provide a more stable and uniform magnetic field
- Four-channel phased-array coil for scanning unique anatomy
- All-in-one cabinet design requires less space for installation



## Panoramic view & humanistic care

- Single-column C-shaped open magnet provides stable and uniform magnetic field
- Nearly 360 ° full open field of view eliminates claustrophobia of patients and provides a more comfortable examination space
- Wider operating space improves interventional accuracy and real-time monitoring efficiency



## Extremely fast and detailed imaging

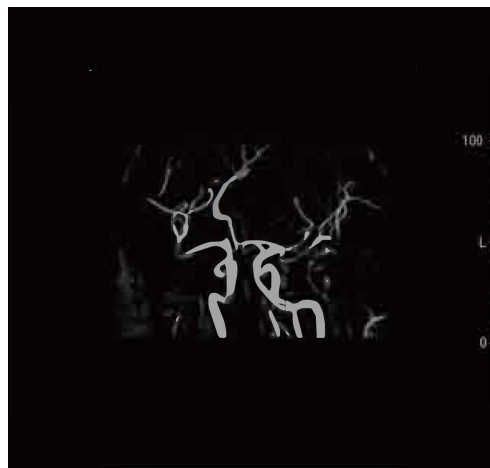
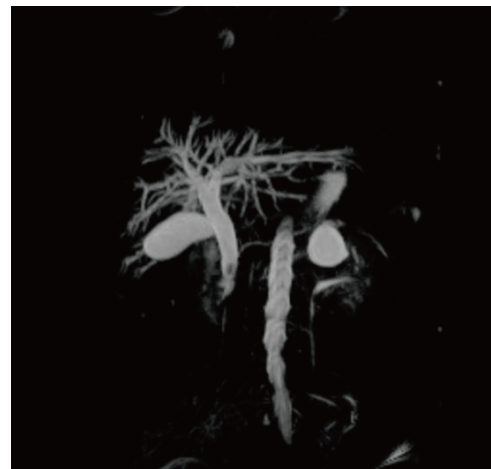
- The adaptive digital frequency conversion PWM regulation technology ensures perfect matching of gradient field intensity and gradient field switching rate
- High-performance display of gradient coils supports extremely fast imaging
- Phase-adjustable orthogonal transmitting coil technology ensures fine and precise image details and fully meets a variety of clinical needs



## KPG (K-power Gradient System)

- National patent technologies provide hardware platform guarantee for perfect vascular imaging and advanced gradient echo technique
- The powerful gradient system supports fast and accurate spatial orientation, thereby providing hardware platform guarantee for perfect vascular imaging and gradient echo technique.

Perfect for TLC and advanced imaging with K-MIP algorithm



## Fully digital spectrometer

- Sole-developed patented technologies guarantee excellent performance, stability and reliability



## Powerful functions & convenient operation

- The process-oriented operation interface is well designed for convenience and efficiency of patient scanning
- Deeply optimized sequence parameters and special technical settings support use and convenient scanning at any time
- Unique system sequence pre-calibration technology and gating technology significantly improve work efficiency
- Convenient image management modules ensure easy and fast image storage and transmission
- Complete DICOM 3.0 network transmission maximizes the network applications of users





## Excellent imaging technology for better image clarity

